



Appendix F

Title VI and Community Impact Analysis

This page is intentionally left blank.

APPENDIX F: TITLE VI AND COMMUNITY IMPACT ANALYSIS

This appendix includes maps and a table to complement the information provided in Chapter 3.

This page is intentionally left blank.

DRAFT DVRPC FFY2026 TIP for NJ (FFY26-29)
**Concentrations of Low-Income Populations
 in the DVRPC–NJ Region**



Concentrations of Low-Income
 Populations by Census Tract:

- No Data
- Well Below Average
- Below Average
- Average
- Above Average
- Well Above Average

Source: U.S. Census 2019-2023 American
 Community Survey 5-Year Estimates

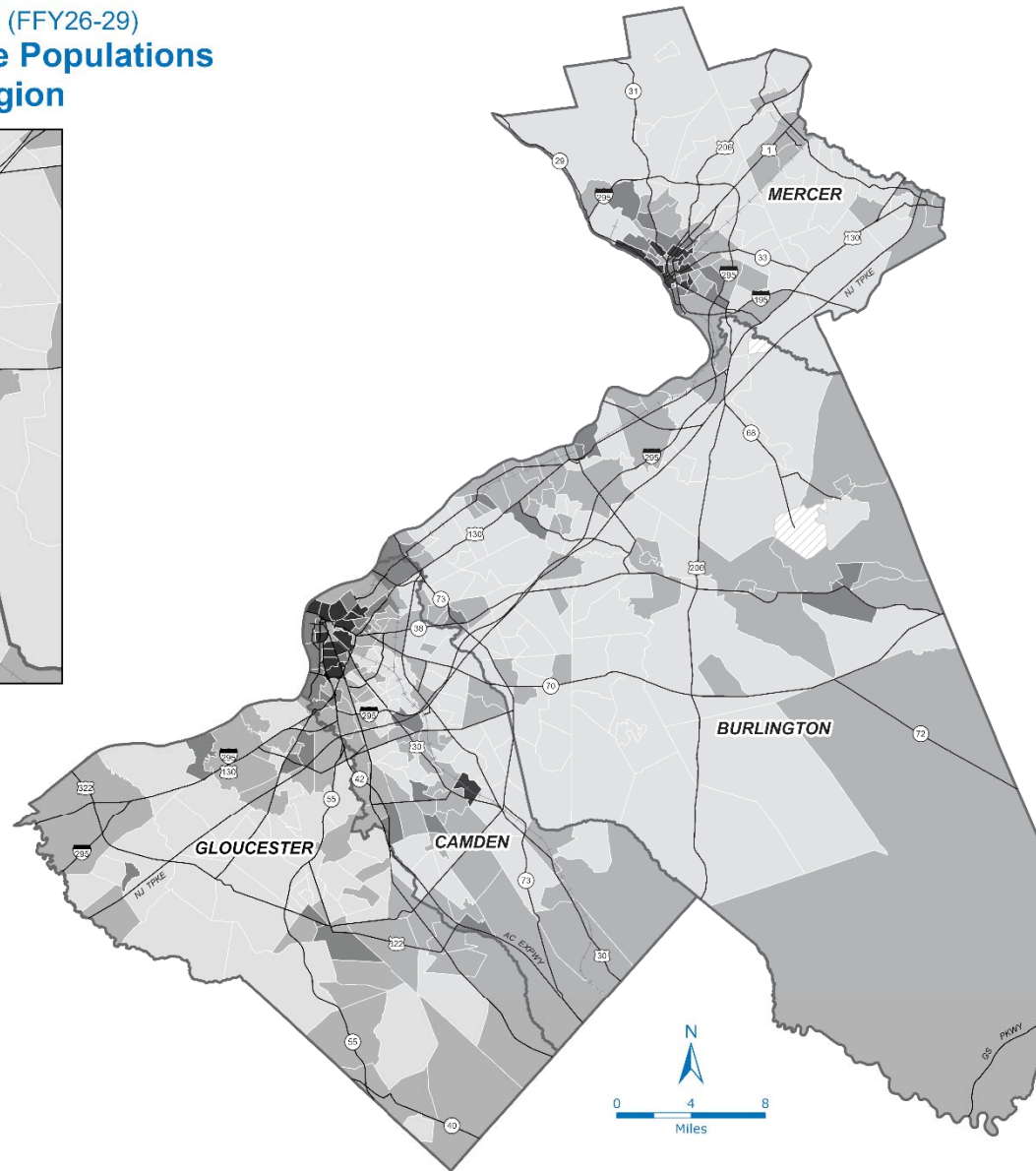








Figure F1: Concentrations of Low-Income Populations

DRAFT DVRPC FFY2026 TIP for NJ (FFY26-29)
Concentrations of Title VI Populations
in the DVRPC–NJ Region

Figure F2: Concentrations of Title VI Populations



Concentrations of Title VI
 Populations by Census Tract:

-  No Data
-  Well Below Average
-  Below Average
-  Average
-  Above Average
-  Well Above Average

Source: U.S. Census 2019-2023 American
 Community Survey 5-Year Estimates

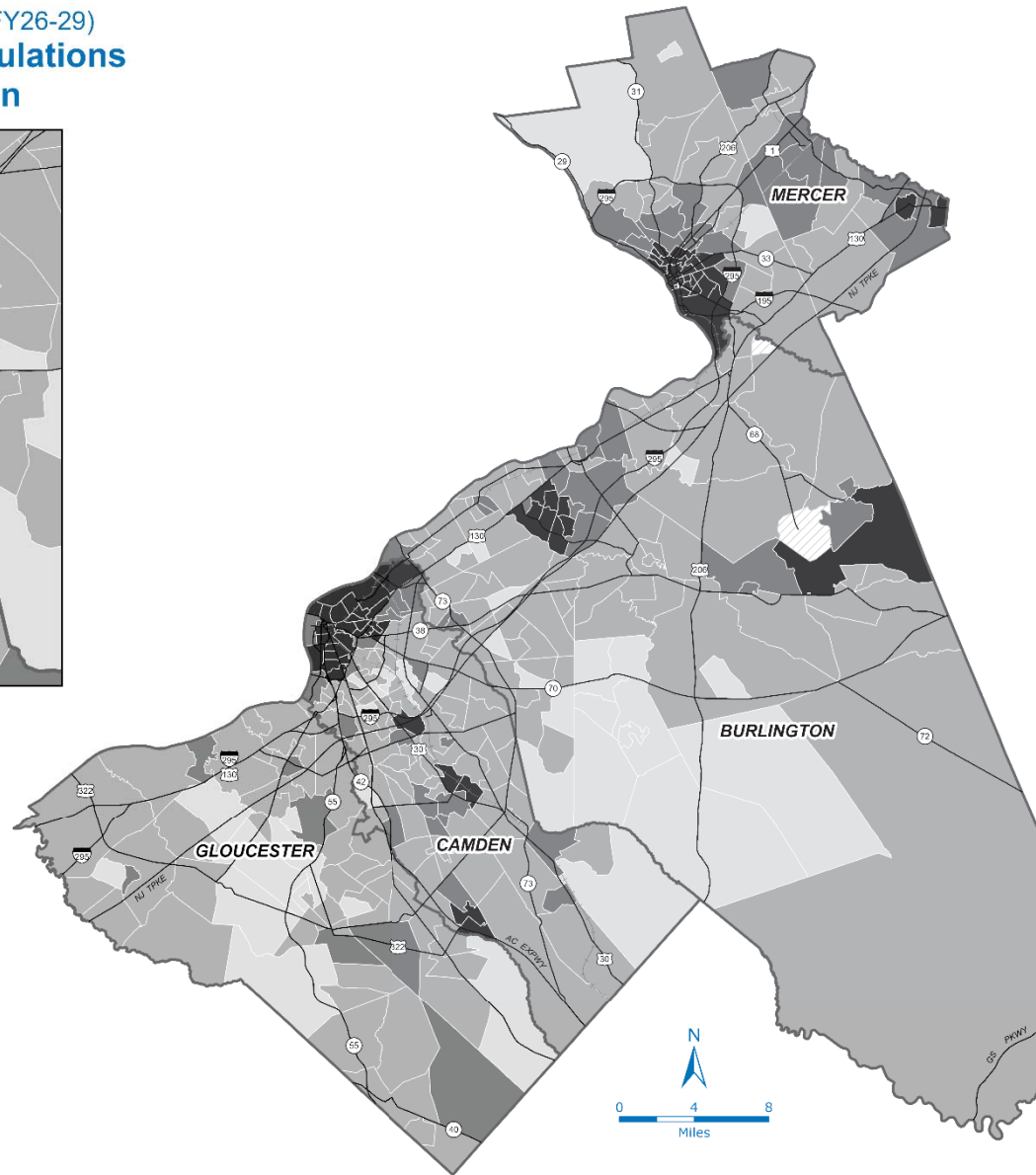


Figure F3: Concentrations of Low-Income Populations and FFY26 NJ TIP Projects
(Highway Program)

DRAFT DVRPC FFY2026 TIP for NJ (FFY26-29)
Concentrations of Low-Income Populations
in the DVRPC–NJ Region



Concentrations of Low-Income Populations by Census Tract

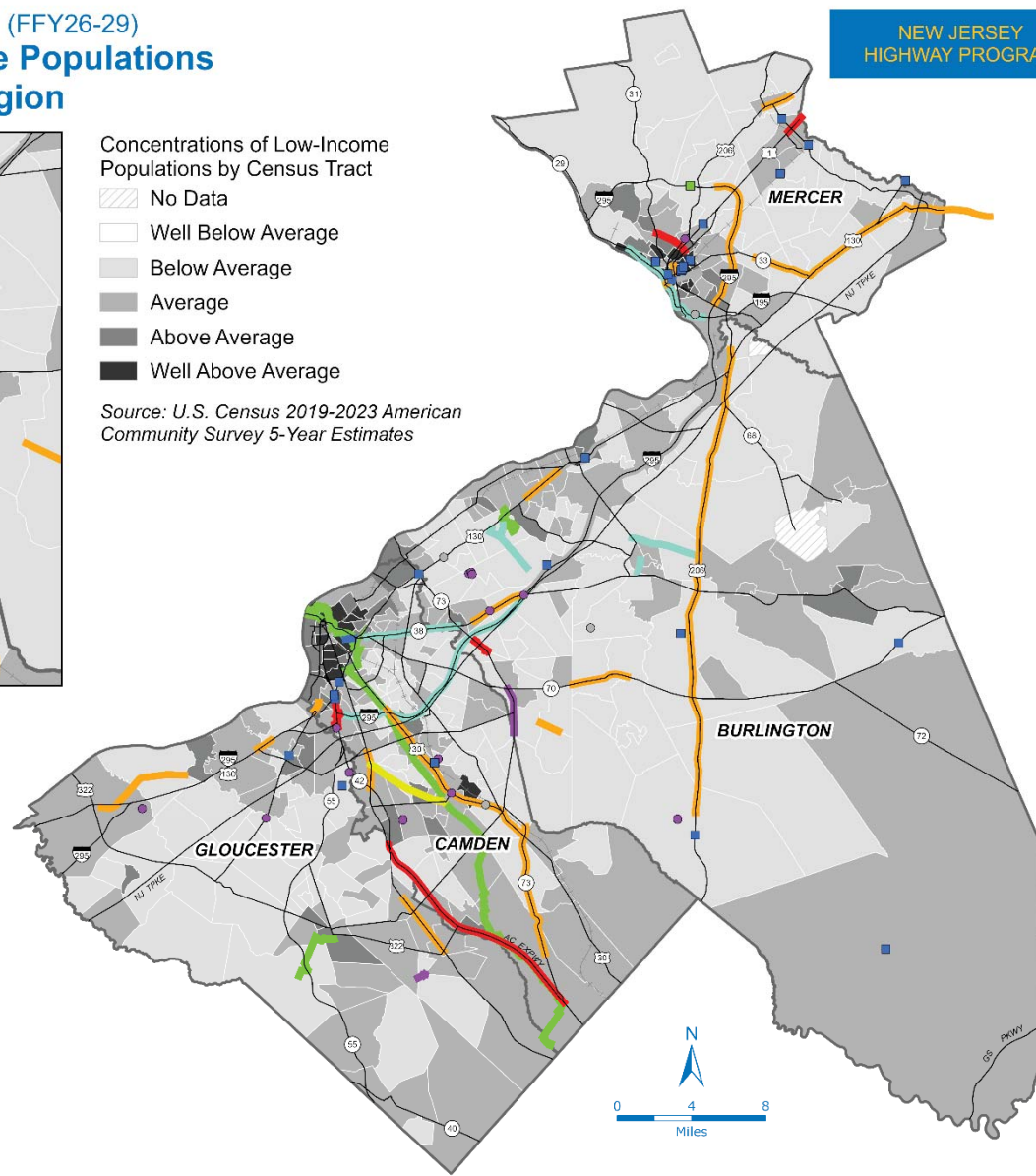
- No Data
- Well Below Average
- Below Average
- Average
- Above Average
- Well Above Average

Source: U.S. Census 2019-2023 American Community Survey 5-Year Estimates

DRAFT DVRPC FFY2026 TIP for NJ (FFY26-29)*

- Intersection/Interchange Improvement
- Bicycle/Pedestrian Improvement
- Bridge Repair/Replacement
- Signal/ITS Improvement
- Roadway New Capacity
- Roadway Rehabilitation
- Streetscape
- Other

* Not all TIP projects can be mapped ("Unmappable") due to the scale and nature of the improvement.



NEW JERSEY
HIGHWAY PROGRAM



DRAFT DVRPC FFY2026 TIP for NJ (FFY26-29)
Concentrations of Title VI Populations
in the DVRPC–NJ Region

Figure F4: Concentrations of Title VI Populations and FFY26 NJ TIP Projects
(Highway Program)

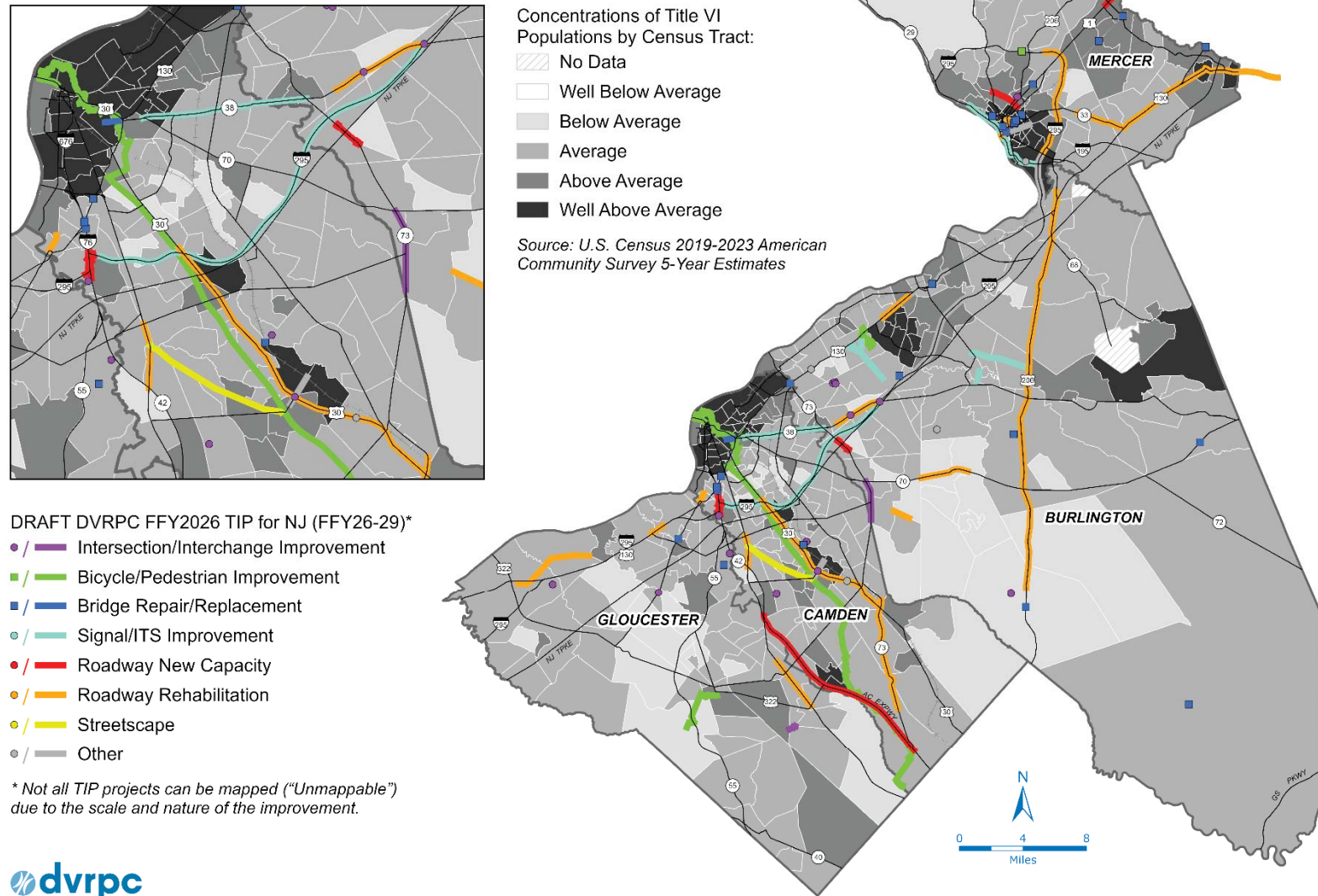


Figure F5: Concentrations of Low-Income Populations and FFY26 NJ TIP Projects
(Transit Program)

DRAFT DVRPC FFY2026 TIP for NJ (FFY26-29)
Concentrations of Low-Income Populations
in the DVRPC–NJ Region



Concentrations of Low-Income Populations by Census Tract

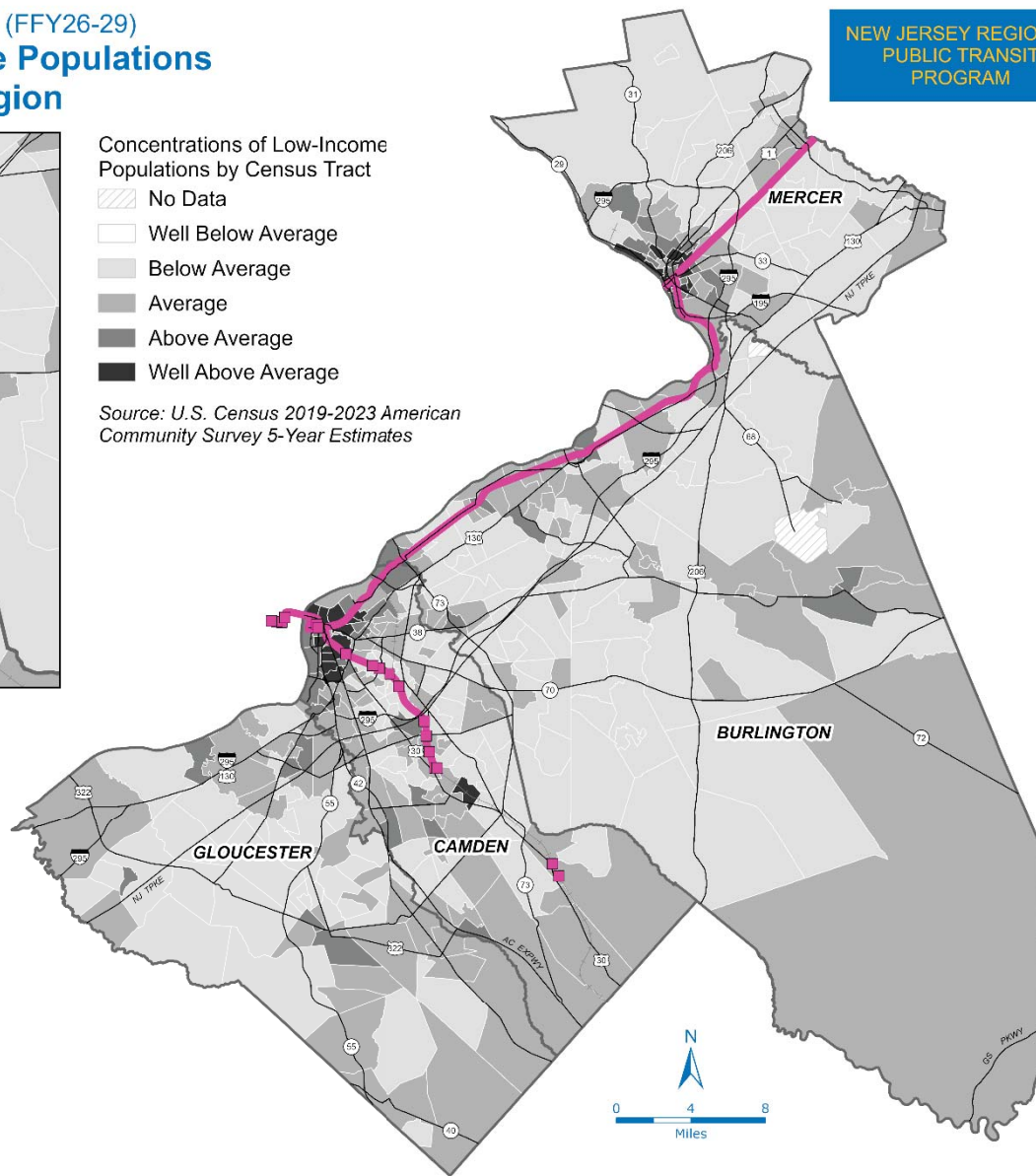
- No Data
- Well Below Average
- Below Average
- Average
- Above Average
- Well Above Average

Source: U.S. Census 2019-2023 American Community Survey 5-Year Estimates

DRAFT DVRPC FFY2026 TIP for NJ (FFY26-29)*

/ Transit Project

* Not all TIP projects can be mapped ("Unmappable") due to the scale and nature of the improvement.



NEW JERSEY REGIONAL
PUBLIC TRANSIT
PROGRAM

DRAFT DVRPC FFY2026 TIP for NJ (FFY26-29)
Concentrations of Title VI Populations
in the DVRPC–NJ Region

NEW JERSEY REGIONAL
 PUBLIC TRANSIT
 PROGRAM



Concentrations of Title VI
 Populations by Census Tract:

- No Data
- Well Below Average
- Below Average
- Average
- Above Average
- Well Above Average

Source: U.S. Census 2019-2023 American
 Community Survey 5-Year Estimates

DRAFT DVRPC FFY2026 TIP for NJ (FFY26-29)*

Transit Project

* Not all TIP projects can be mapped ("Unmappable")
 due to the scale and nature of the improvement.

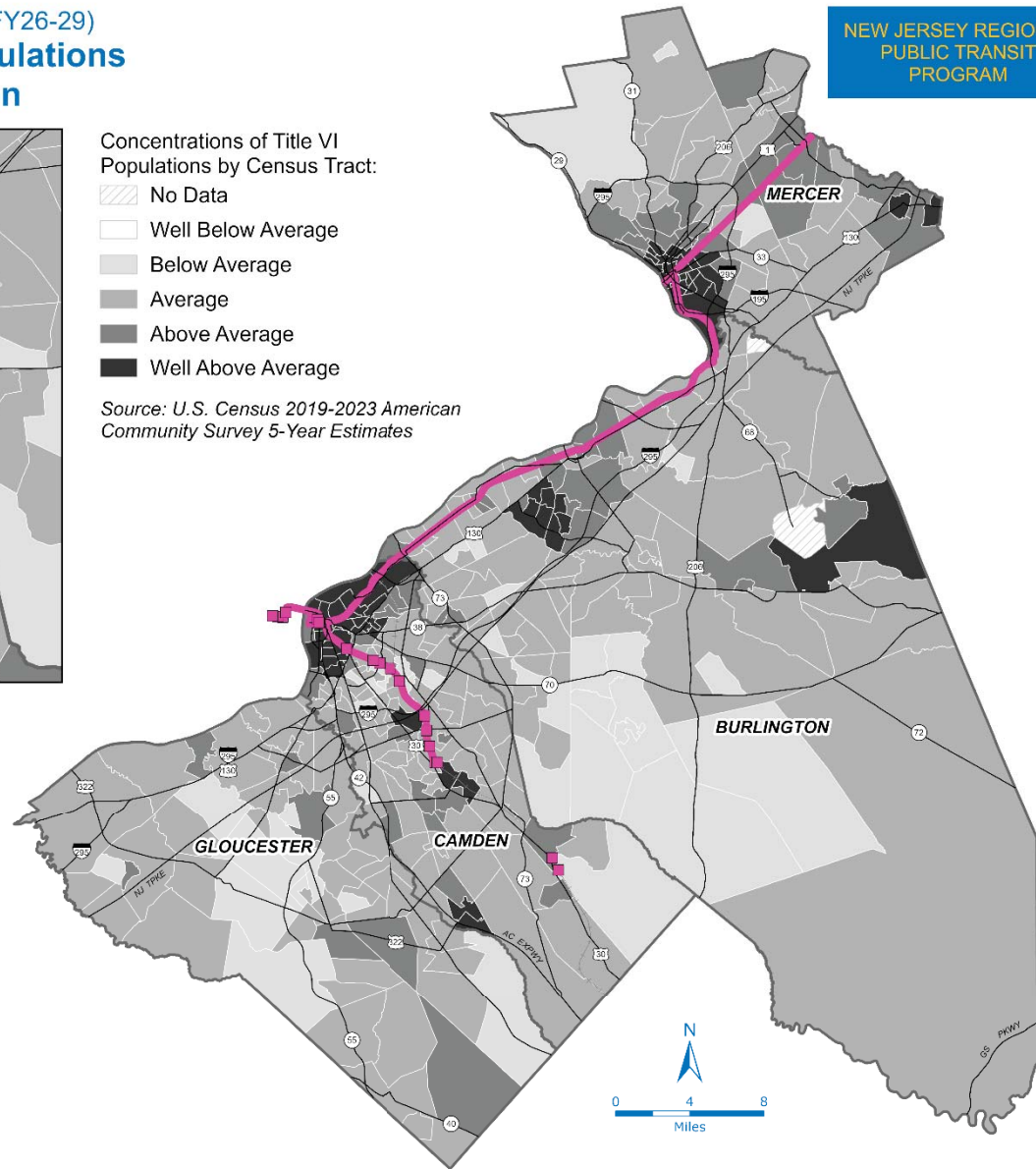
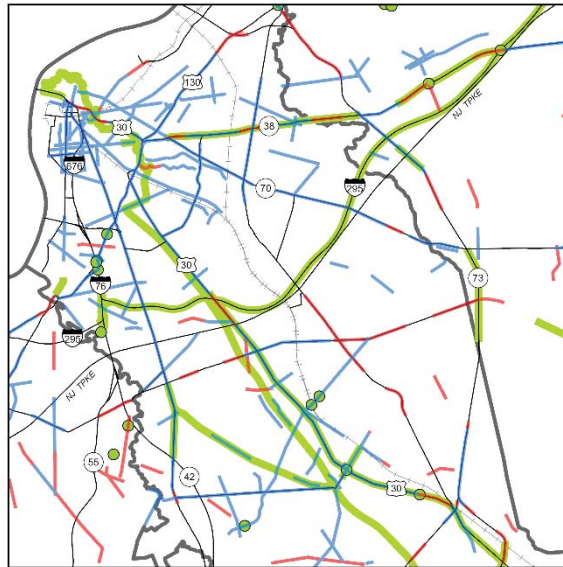


Figure F6: Concentrations of Title VI Populations and FFY26 NJ TIP Projects
 (Transit Program)

Figure F7: Regional High Injury Network with FFY26 NJ TIP Highway Program Projects

DRAFT DVRPC FFY2026 TIP for NJ (FFY26-29)
**Regional High Injury Network (RHIN) with
 Highway Program Projects in the DVRPC–NJ Region**



DRAFT DVRPC FFY2026 TIP for NJ (FFY26-29)*

● / — Highway Program Project

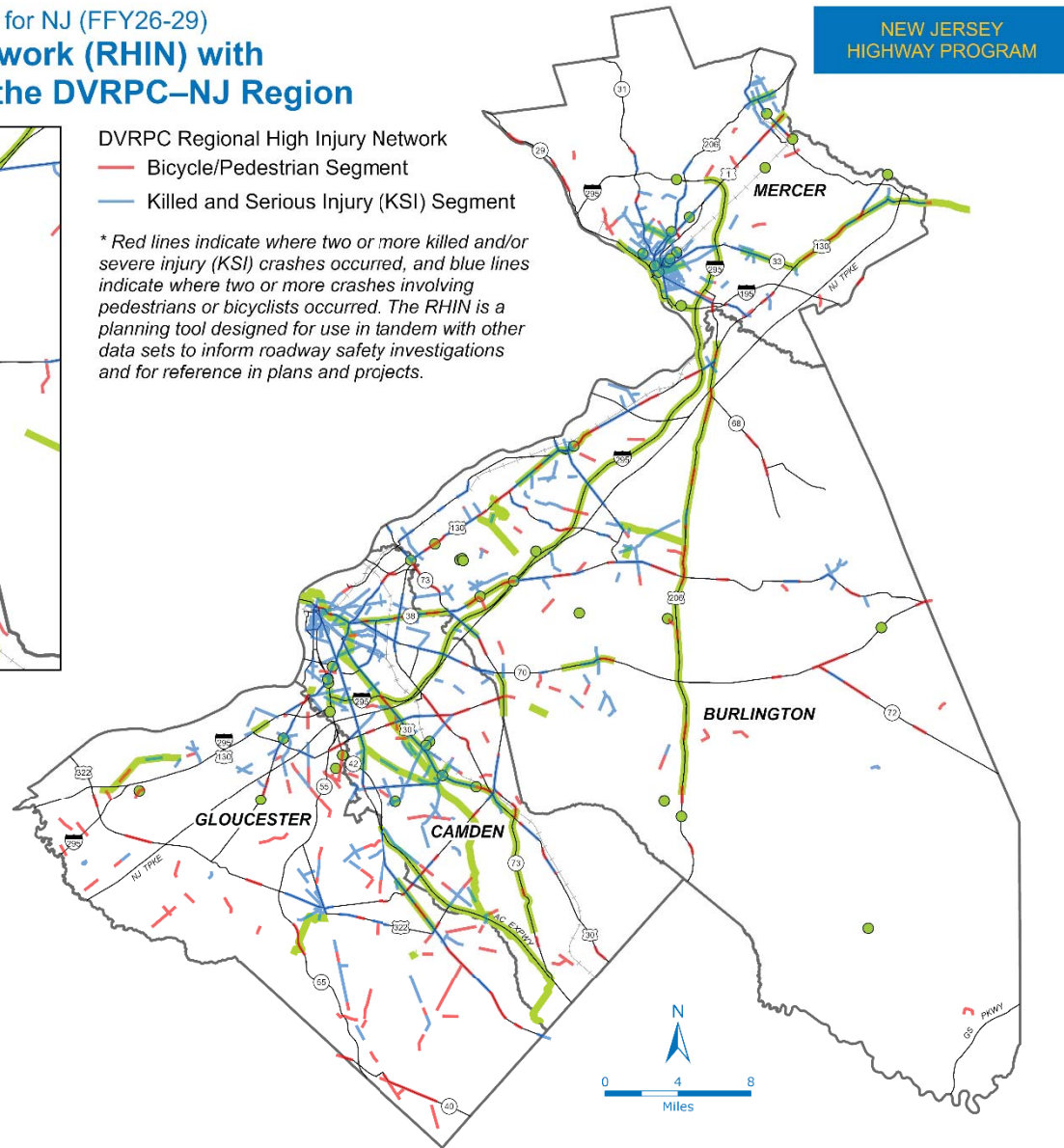
* Not all TIP projects can be mapped ("Unmappable") due to the scale and nature of the improvement.

DVRPC Regional High Injury Network

— Bicycle/Pedestrian Segment

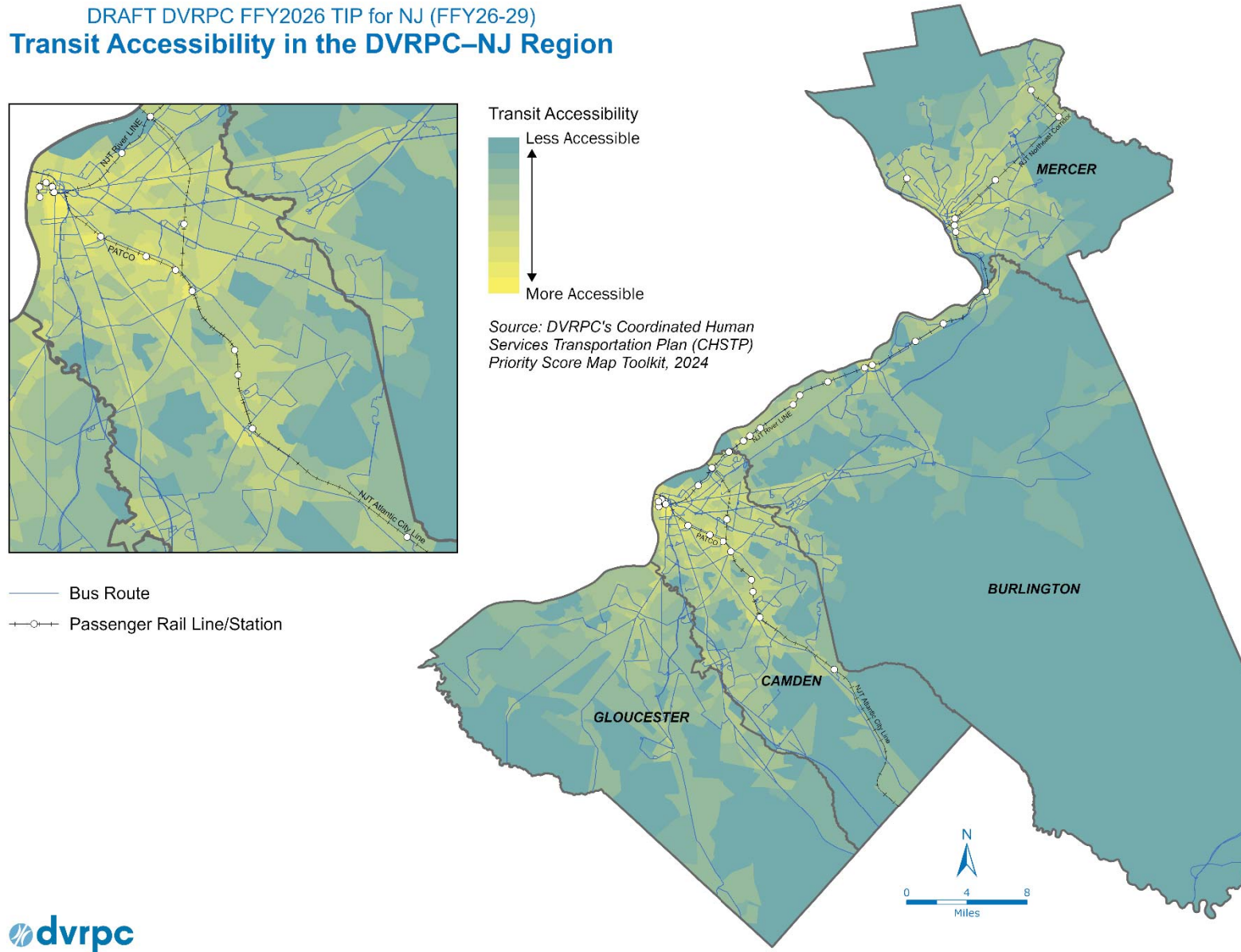
— Killed and Serious Injury (KSI) Segment

* Red lines indicate where two or more killed and/or severe injury (KSI) crashes occurred, and blue lines indicate where two or more crashes involving pedestrians or bicyclists occurred. The RHIN is a planning tool designed for use in tandem with other data sets to inform roadway safety investigations and for reference in plans and projects.



DRAFT DVRPC FFY2026 TIP for NJ (FFY26-29)
Transit Accessibility in the DVRPC–NJ Region

Figure F8: Transit Accessibility in the DVRPC–NJ Region



DB #	Project Title	Cost (\$000) FFY26-FFY37	Project Type
00377	Ferry Program	\$ 40.00	Other
01300	Transportation Systems Management and Operations (TSMO)	\$ 1.66	Signal/ITS Improvements
01309	Maritime Transportation System	\$ 165.00	Other
01316	Transit Village Program	\$ 10.00	Bicycle/Pedestrian Improvement
01335	Betterments, Dams	\$ 2.28	Other
02379	Congestion Relief, Intelligent Transportation System Improvements (Smart Move Program)	\$ 32.50	Signal/ITS Improvements
03304	Bridge Deck/Superstructure Replacement Program	\$ 348.33	Bridge Repair/Replacement
03309	Environmental Project Support	\$ 9.30	Other
04324	Electrical Load Center Replacement, Statewide	\$ 48.00	Roadway Rehabilitation
05304	Construction Program IT System (TRNS.PORT)	\$ 42.40	Signal/ITS Improvements
05340	Right of Way Full-Service Consultant Term Agreements	\$ 3.15	Other
05342	Design, Geotechnical Engineering Tasks	\$ 3.88	Other
06326	Local Concept Development Support	\$ 7.00	Other
06402	Safe Streets to Transit Program	\$ 10.00	Bicycle/Pedestrian Improvement
07332	Minority and Women Workforce Training Set Aside	\$ 10.63	Other
08381	Bridge Replacement, Future Projects	\$ 281.62	Bridge Repair/Replacement
08387	Local Bridges, Future Needs	\$ 440.00	Bridge Repair/Replacement
08415	Airport Improvement Program	\$ 40.00	Other
09316	Culvert Replacement Program	\$ 28.90	Bridge Repair/Replacement
09388	Highway Safety Improvement Program Planning	\$ 100.00	Intersection/Interchange Improvements
10344	Project Development: Concept Development	\$ 53.00	Other
10347	Local Aid Consultant Services	\$ 1.00	Other
11344	ADA Curb Ramp Implementation	\$ 9.40	Bicycle/Pedestrian Improvement
11383	Transportation Management Associations	\$ 23.00	Other
13304	Intelligent Transportation System Resource Center	\$ 32.20	Signal/ITS Improvements
13305	Job Order Contracting Infrastructure Repairs, Statewide	\$ 320.60	Other
13306	Mobility and Systems Engineering Program	\$ 208.00	Signal/ITS Improvements
13307	Salt Storage Facilities - Statewide	\$ 23.00	Other
13308	Statewide Traffic Operations and Support Program	\$ 156.40	Signal/ITS Improvements
13323	Bridge Preventive Maintenance	\$ 790.25	Bridge Repair/Replacement
14300	Title VI and Nondiscrimination Supporting Activities	\$ 0.85	Other
14404	Bridge Maintenance and Repair, Movable Bridges	\$ 189.25	Bridge Repair/Replacement
15343	Intelligent Traffic Signal Systems	\$ 237.78	Signal/ITS Improvements
17341	Bridge Inspection Program, Minor Bridges	\$ 63.80	Bridge Repair/Replacement
17353	Storm Water Asset Management	\$ 37.60	Other
17357	Bridge Maintenance Fender Replacement	\$ 84.40	Bridge Repair/Replacement
17358	Bridge Maintenance Scour Countermeasures	\$ 63.90	Bridge Repair/Replacement
17360	Emergency Management and Transportation Security Support	\$ 11.63	Other
17390	Local Freight Impact Fund	\$ 280.00	Other
19332	Vegetation Safety Management Program	\$ 30.00	Other
19600	Smart and Connect Corridors Program	\$ 55.00	Other
22319	Sign Structure Replacement Contract 2021-2	\$ 6.18	Other
22352	Carbon Reduction Program	\$ 32.44	Other
22353	PROTECT	\$ 400.07	Other
22355	CMAQ Initiatives, Statewide	\$ 214.45	Other
23313	Specified Safety Program	\$ 20.00	Other
23314	ITS Safety Program	\$ 40.00	Signal/ITS Improvements
23315	Tunnel Inspection, NTIS	\$ 3.63	Other
97008	High-Mast Light Poles	\$ 18.40	Streetscape
98315	Bridge Emergency Repair	\$ 821.25	Bridge Repair/Replacement
98316	Bridge Scour Assessment	\$ 1.50	Bridge Repair/Replacement
99327A	Resurfacing, Federal	\$ 92.00	Roadway Rehabilitation
99358	Safe Routes to School Program	\$ 75.87	Bicycle/Pedestrian Improvement
99358B	Safe Routes to School program, non-infrastructure	\$ 10.00	Bicycle/Pedestrian Improvement
99372	Orphan Bridge Reconstruction	\$ 20.75	Bridge Repair/Replacement
99409	Recreational Trails Program	\$ 12.27	Bicycle/Pedestrian Improvement
D0204	Transportation and Community Development Initiative (TCDI) DVRPC	\$ 3.00	Other
D026	DVRPC, Future Projects	\$ 47.13	Other
D0302	Burlington County Roadway Safety Improvements	\$ 5.00	Roadway Rehabilitation
D0401	Gloucester County Roadway Safety Improvements	\$ 5.00	Roadway Rehabilitation
D0407	Ozone Action Program in New Jersey	\$ 0.40	Other
D0410	Camden County Roadway Safety Improvements	\$ 5.30	Roadway Rehabilitation
D0601	Camden County Bus Purchase	\$ 4.38	Transit Improvements
D1011	Mercer County Bus Purchase	\$ 4.21	Transit Improvements
D1305	Pedestrian Bridge and Tunnel Rehabilitation	\$ 1.88	Transit Improvements
D1510	Burlington County Bus Purchase	\$ 1.42	Transit Improvements
D1601	New Jersey Regional Signal Retiming Initiative	\$ 3.80	Signal/ITS Improvements
D2004	Transportation Operations	\$ 1.30	Signal/ITS Improvements
D2005	Regional Transportation Demand Management (TDM) Program	\$ 1.63	Other
D2020	New or Upgraded Traffic Signal Systems at Intersections, Phase 1	\$ 2.63	Signal/ITS Improvements
D2021	New or Upgraded Traffic Signal Systems at Intersections, Phase 2	\$ 3.21	Signal/ITS Improvements

D2022	New or Upgraded Traffic Signal Systems at Intersections, Phase 3	\$ 4.19	Signal/ITS Improvements
D2305	DVRPC Carbon Reduction Program	\$ 37.79	Other
D9807	Gloucester County Bus Purchase	\$ 0.81	Transit Improvements
DR008	Electrical Cable Replacement	\$ 12.50	Transit Improvements
DR034	Preventive Maintenance	\$ 13.71	Transit Improvements
DR036	Transit Enhancements	\$ 2.25	Transit Improvements
DR2302	Embankment Restoration, Drainage Improvement & Retaining Walls Rehabilitation	\$ 10.00	Transit Improvements
DR2304	PATCO Substation Improvements	\$ 14.38	Transit Improvements
T06	Bus Passenger Facilities/Park and Ride	\$ 1.84	Transit Improvements
T08	Bus Support Facilities and Equipment	\$ 314.89	Transit Improvements
T106	Private Carrier Equipment Program	\$ 6.90	Transit Improvements
T111	Bus Acquisition Program	\$ 441.90	Transit Improvements
T112	Rail Rolling Stock Procurement	\$ 213.25	Transit Improvements
T120	Small/Special Services Program	\$ 4.16	Transit Improvements
T121	Physical Plant	\$ 20.91	Transit Improvements
T122	Miscellaneous	\$ 1.15	Transit Improvements
T13	Claims support	\$ 0.23	Transit Improvements
T135	Preventive Maintenance-Bus	\$ 242.22	Transit Improvements
T143	ADA--Platforms/Stations	\$ 1.15	Transit Improvements
T150	Section 5310 Program	\$ 33.87	Transit Improvements
T151	Section 5311 Program	\$ 20.03	Transit Improvements
T16	Environmental Compliance	\$ 6.90	Transit Improvements
T20	Immediate Action Program	\$ 267.30	Transit Improvements
T210	Transit Enhancements/Transp Altern Prog (TAP)/Altern Transit Improv (ATI)	\$ 181.58	Transit Improvements
T300	Transit Rail Initiatives	\$ 84.46	Transit Improvements
T37	Rail Support Facilities and Equipment	\$ 4.72	Transit Improvements
T39	Preventive Maintenance-Rail	\$ 141.38	Transit Improvements
T42	Track Program	\$ 16.70	Transit Improvements
T43	High Speed Track Program	\$ 1.52	Transit Improvements
T50	Signals and Communications/Electric Traction Systems	\$ 11.13	Transit Improvements
T500	Technology Improvements	\$ 35.11	Transit Improvements
T508	Security Improvements	\$ 6.14	Other
T509	Safety Improvement Program	\$ 0.42	Transit Improvements
T515	Casino Revenue Fund	\$ 130.89	Transit Improvements
T53E	Locomotive Overhaul	\$ 2.84	Transit Improvements
T53G	Rail Fleet Overhaul	\$ 63.78	Transit Improvements
T55	Other Rail Station/Terminal Improvements	\$ 14.28	Transit Improvements
T68	Capital Program Implementation	\$ 92.00	Transit Improvements
T88	Study and Development	\$ 17.25	Other
T902	Rail Station Resiliency	\$ 0.44	Other
T903	Rail Infrastructure Resiliency	\$ 0.44	Other
X03A	Restriping Program & Line Reflectivity Management System	\$ 230.00	Roadway Rehabilitation
X03E	Resurfacing Program	\$ 716.71	Roadway Rehabilitation
X065	Local CMAQ Initiatives	\$ 16.78	Other
X07A	Bridge Inspection	\$ 332.50	Bridge Repair/Replacement
X07F	Bridge and Structure Inspection, Miscellaneous	\$ 1.16	Other
X10	Program Implementation Costs, NJDOT	\$ 1,182.25	Other
X100A	Local Bridges, DVRPC	\$ 50.00	Bridge Repair/Replacement
X106	Design, Emerging Projects	\$ 132.05	Other
X107	Transportation Alternatives Program	\$ 82.50	Streetscape
X10A	Staff Augmentation	\$ 7.20	Other
X11	Unanticipated Design, Right of Way and Construction Expenses, State	\$ 622.38	Other
X12	Acquisition of Right of Way	\$ 4.45	Roadway New Capacity
X126	Transportation Research Technology	\$ 12.48	Other
X135	Pre-Apprenticeship Training Program for Minorities and Women	\$ 4.60	Other
X137	Legal Costs for Right of Way Condemnation	\$ 20.75	Other
X140	Planning and Research	\$ 109.04	Other
X142	DBE Supportive Services Program	\$ 5.72	Other
X144	Regional Action Program	\$ 21.00	Other
X15	Equipment (Vehicles, Construction, Safety)	\$ 146.00	Other
X150	State Police Enforcement and Safety Services	\$ 202.30	Other
X151	Interstate Service Facilities	\$ 5.81	Roadway Rehabilitation
X152	Rockfall Mitigation	\$ 21.60	Intersection/Interchange Improvements
X154	Drainage Rehabilitation and Maintenance, State	\$ 228.25	Roadway Rehabilitation
X154D	Drainage Rehabilitation & Improvements	\$ 163.30	Roadway Rehabilitation
X15A	Equipment, Snow and Ice Removal	\$ 31.00	Roadway Rehabilitation
X160	Solid and Hazardous Waste Cleanup, Reduction and Disposal	\$ 15.50	Other
X180	Construction Inspection	\$ 121.00	Other
X182	Utility Reconnaissance and Relocation	\$ 19.42	Other
X185	Bicycle & Pedestrian Facilities/Accommodations	\$ 60.00	Bicycle/Pedestrian Improvement
X186	Local Aid, Infrastructure Fund	\$ 75.00	Roadway Rehabilitation
X186B	Local Aid, State Transportation Infrastructure Bank	\$ 205.00	Local County & Municipal Aid
X197	Disadvantaged Business Enterprise	\$ 2.30	Other

X199	Youth Employment and STEM Outreach Solutions	\$	3.22	Other
X200C	New Jersey Scenic Byways Program	\$	5.00	Other
X201	Guiderail Upgrade	\$	292.00	Streetscape
X233	Motor Vehicle Crash Record Processing	\$	64.00	Intersection/Interchange Improvements
X239	Sign Structure Inspection Program	\$	16.10	Roadway Rehabilitation
X239A	Sign Structure Rehabilitation/Replacement Program	\$	9.20	Roadway Rehabilitation
X241	Electrical Facilities	\$	48.00	Signal/ITS Improvements
X244	Training and Employee Development	\$	23.00	Other
X2500	Information Technology Support	\$	50.00	Other
X28B	Park and Ride/Transportation Demand Management Program	\$	5.40	Other
X29	Physical Plant	\$	277.50	Other
X30	Planning, Federal-Aid	\$	310.61	Other
X30A	Metropolitan Planning	\$	69.28	Other
X34	New Jersey Rail Freight Assistance Program	\$	250.00	Other
X35A	Rail-Highway Grade Crossing Program, State	\$	38.00	Intersection/Interchange Improvements
X35A1	Rail-Highway Grade Crossing Program, Federal	\$	9.59	Intersection/Interchange Improvements
X39	Signs Program, Statewide	\$	33.00	Roadway Rehabilitation
X41C1	Local County Aid, DVRPC	\$	375.67	Local County & Municipal Aid
X47	Traffic Signal Replacement	\$	79.00	Signal/ITS Improvements
X66	Traffic Monitoring Systems	\$	151.83	Signal/ITS Improvements
X70	Bridge Management System	\$	13.80	Bridge Repair/Replacement
X72B	Betterments, Roadway Preservation	\$	138.00	Roadway Rehabilitation
X72C	Betterments, Safety	\$	175.00	Intersection/Interchange Improvements
X75	Environmental Investigations	\$	58.13	Other
X98C1	Local Municipal Aid, DVRPC	\$	339.55	Local County & Municipal Aid

This page is intentionally left blank.